



Hunter Douglas PowerView ELAN Driver

V1.2 rev20160510

Overview

This driver integrates a Hunter Douglas PowerView Hub into your ELAN control system. The driver was created and tested on a gSC2 series controller using g!Viewer. To use this driver, add the driver to the system, and follow the setup.

Changelog

- v1.0 - Original Release
- v1.1 - Adjusted Scene Data Parsing
- v1.2 - Updated Scene Fetching to Handle the Hub's Buffer, Added "Discover Scenes" Button, Added Auto Scene Adding

Specification

This package includes the following:

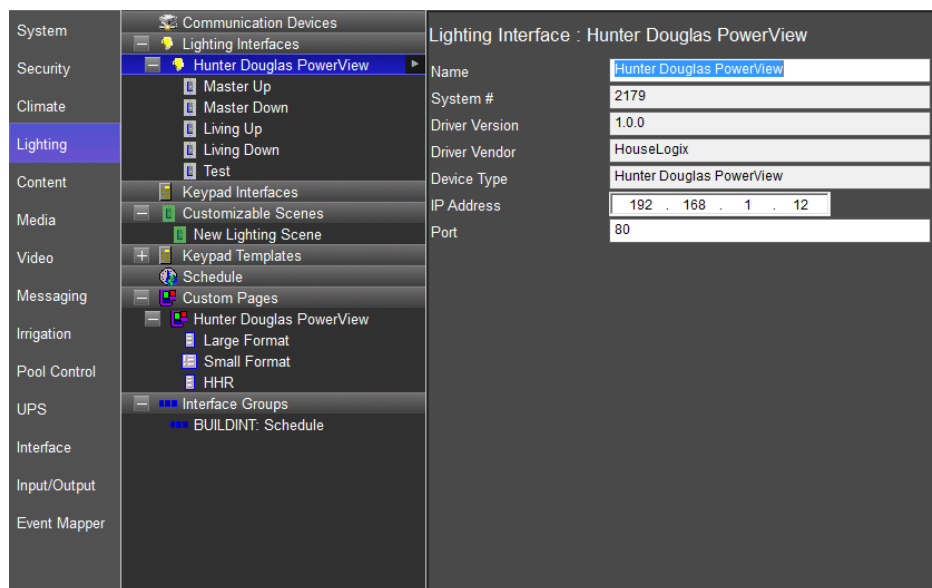
- Compiled ELAN Driver (Hunter_Douglas_PowerView.EDRVC)
 - Controls hardware device.

IP Connection

The driver communicates to and from the device through an IP connection and must be connected in order for the driver to function.

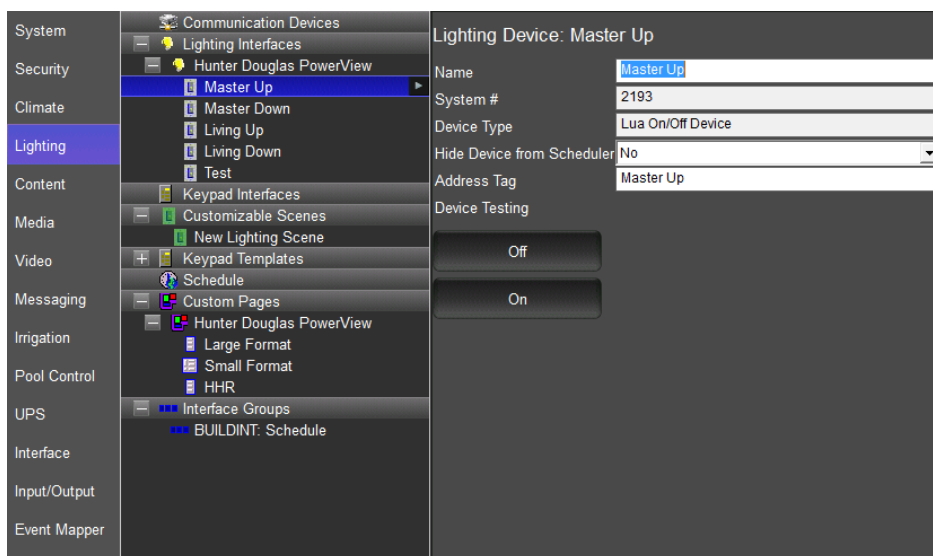
Setup

1. Add the driver to the controller as a "Lighting Interface" in g!Tools Configurator.



2. Enter the IP Address of the Hunter Douglas PowerView Hub into the "IP Address" field in the driver's configuration. The driver will automatically discover the scenes on the PowerView Hub, but a "Discover Scenes" button is available to force the driver to fetch the latest scenes from the PowerView Hub.

3. The driver will automatically add all of the scenes from the PowerView hub as light devices when discovering scenes. You can manually add a "Lua On/Off Device" for each scene you wish to control, entering the exact scene name found in the Hunter Douglas PowerView App in to the "Address Tag" field.



4. Add a "Light Toggle Control" button on the page(s) where you wish to execute a scene from, and "Connect To" the previously configured "Lua On/Off Device" for the scene you wish to execute.

